

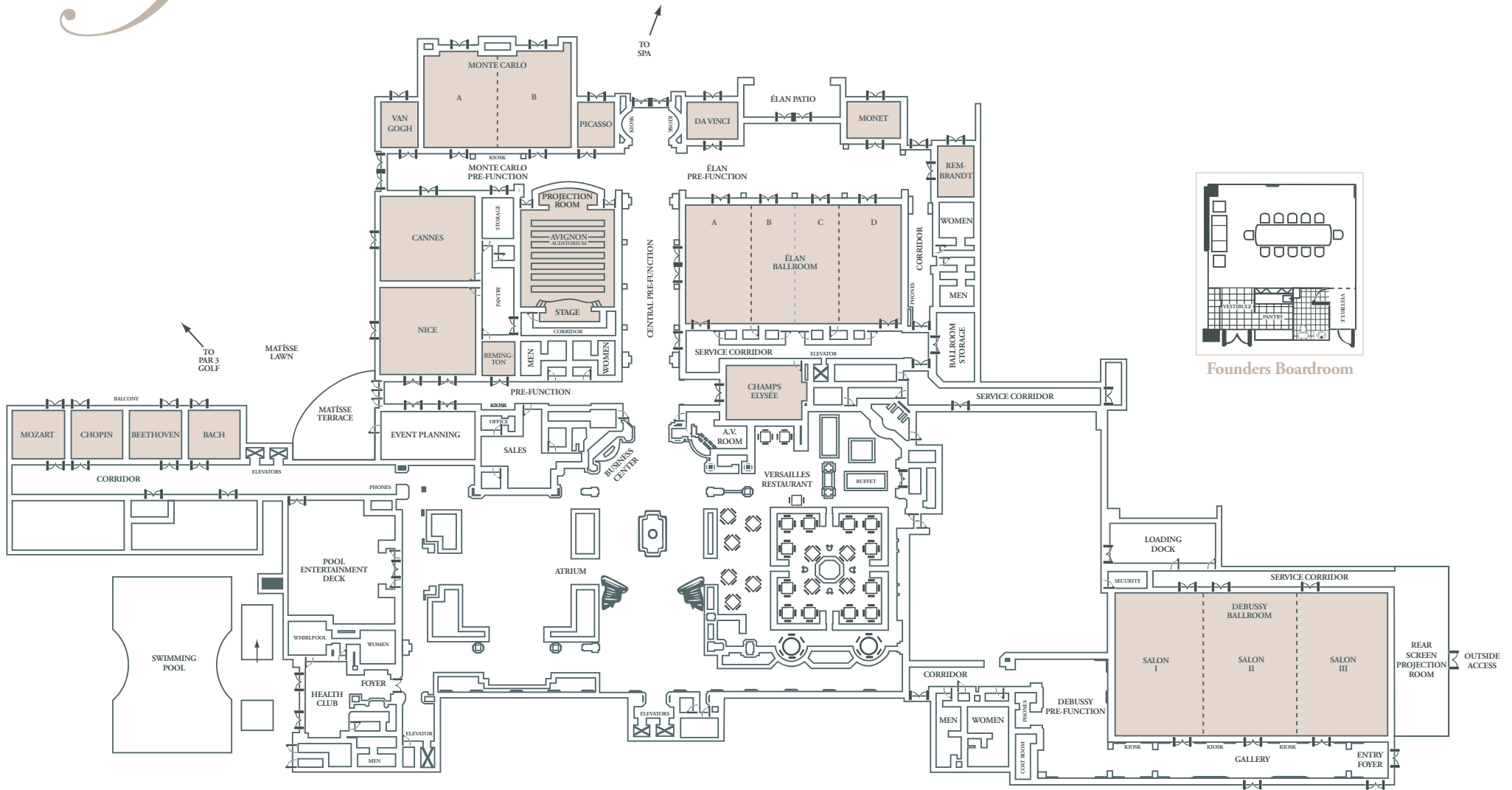


Capacity Chart

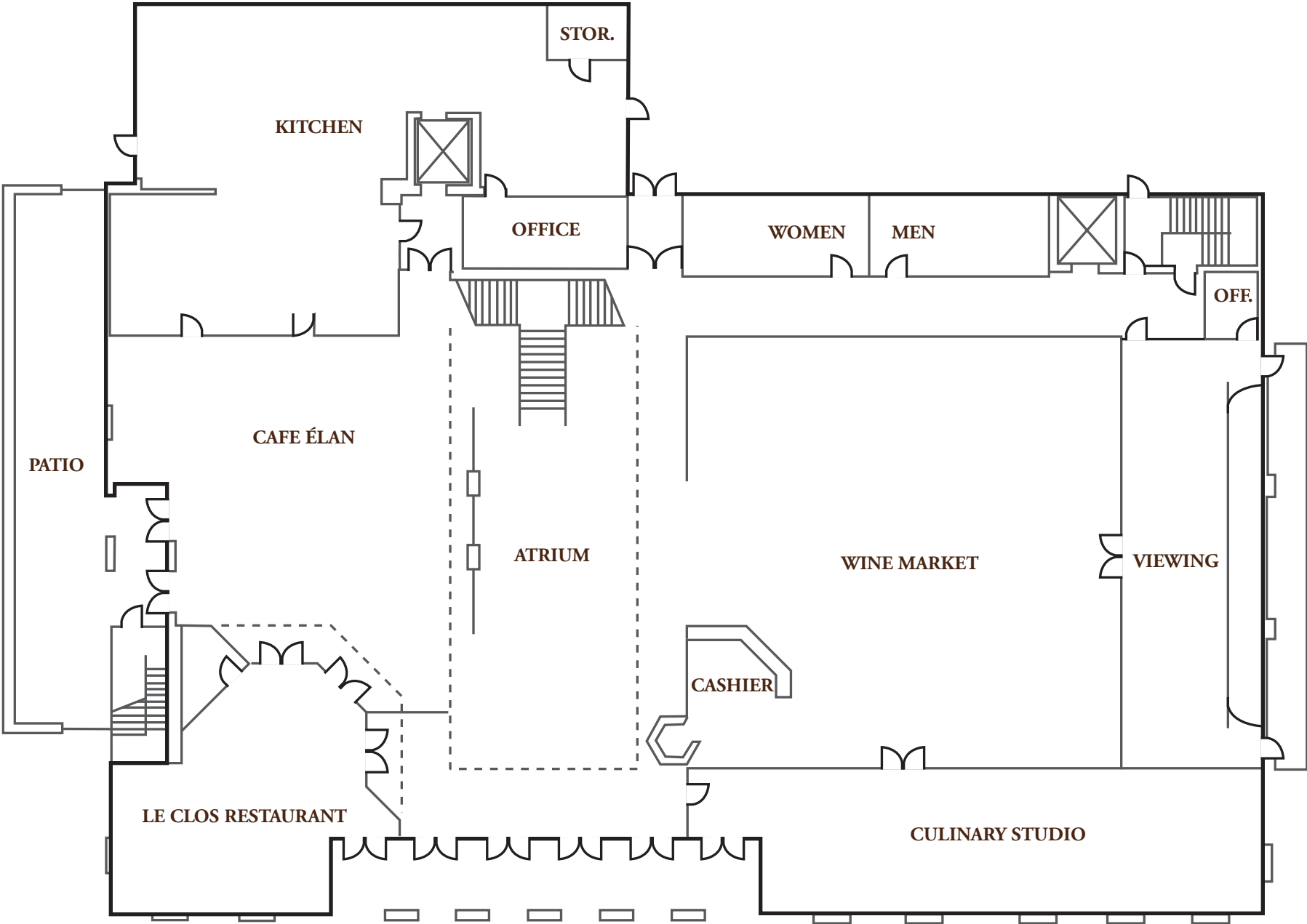
MEETING ROOM	DIMENSIONS (L x W x H)	SQUARE FOOTAGE	CAPACITY					
			THEATRE	SCHOOL- ROOM	CONFERENCE	U-SHAPE	RECEPTION	BANQUET*
Conference Center								
Debussy Ballroom	104 x 59 x 14	6,136	650	375	—	130	750	450
Salons I & II or II & III	70 x 59 x 14	4,130	400	250	70	80	500	280
Salon I, II or III	35 x 59 x 14	2,050	200	125	42	40	150	140
Élan Ballroom	52 x 82 x 14	4,264	400	250	—	80	500	280
with rear screen	—	—	250	160	—	60	—	140
Salon A	26 x 52 x 14	1,400	90	60	40	48	125	80
Salon B & C	24 x 52 x 14	1,250	90	60	40	48	125	80
Salon D	26 x 52 x 14	1,400	90	60	40	48	125	80
Salons A & B or C & D	37 x 52 x 14	2,025	150	95	40	72	175	130
Salons A, B & C or B, C & D	37 x 52 x 14	2,650	200	120	60	—	250	160
Monte Carlo	40 x 57 x 12	2,300	180	130	42	46	200	140
Section A or B	28 x 40 x 12	1,100	80	60	34	30	100	80
Avignon	38 x 47	1,800	—	60	—	—	—	—
Van Gogh	15 x 21 x 10	315	15	—	16	—	20	16
Picasso	15 x 21 x 10	315	15	—	16	—	20	16
Davinci	17 x 21 x 10	350	18	15	16	—	25	16
Monet	17 x 21 x 10	350	18	15	16	—	25	16
Rembrandt	15 x 23 x 10	345	—	—	12	—	—	—
Champs Elysée	24 x 29 x 10	700	50	25	12	—	40	30
Founders	29 x 37 x 10	1,073	—	—	12	—	—	—
Nice	37 x 37 x 10	1,400	90	50	30	40	100	80
Cannes	37 x 37 x 10	1,400	90	50	30	40	100	80
Mozart	26 x 27 x 9	702	40	24	22	18	20	30
Chopin	26 x 27 x 9	702	40	24	22	18	20	30
Beethoven	26 x 27 x 9	702	40	24	22	18	20	30
Bach	26 x 27 x 9	702	40	24	22	18	20	30
Matisse Terrace	—	—	100	—	—	—	100	60
Matisse Lawn	—	—	200	—	—	—	120	90
Entertainment Deck	—	—	200	—	—	—	150	100
Inn Atrium	—	—	250	—	—	—	275	200
Winery								
Bordeaux	66 x 39 x 10	2,574	150	80	34	40	200	90
Cask Room	39 x 64 x 15	2,496	—	—	—	—	110	70
Pavilion	140 x 46 x 15	6,440	—	—	—	—	850	500
Art Gallery	39 x 40 x 10	1,560	—	—	—	—	90	30
Golf Pavilion	—	—	—	—	—	—	300	250

* Rounds of 10

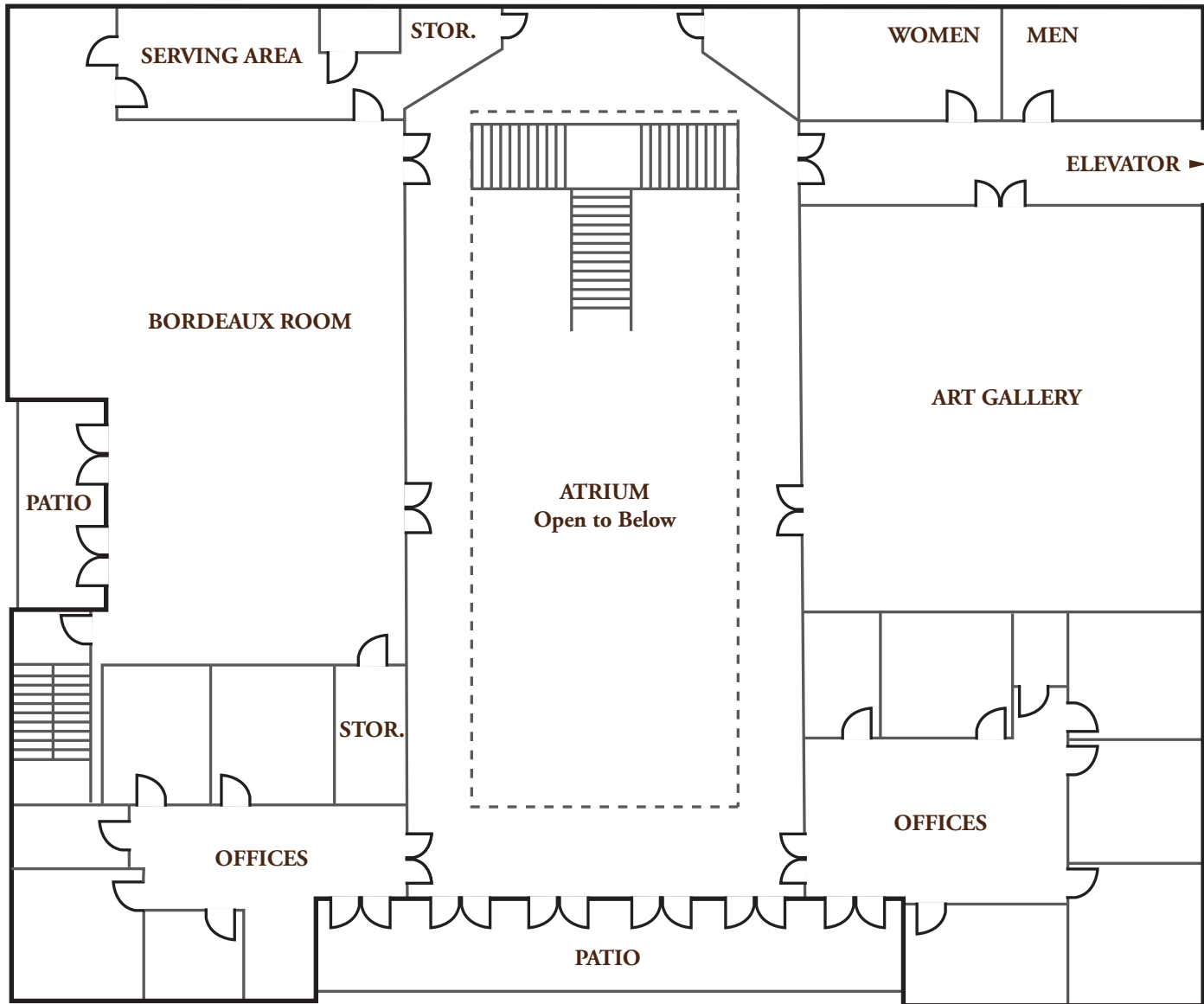
Floor Plan



Château Élan Winery, 1st Floor



Château Élan Winery, 2nd Floor



Château Élan Winery, Lower Floor Facilities

